

ISONOE[®]

FLOATING POINTS FP MIXER

www.isonoe.com

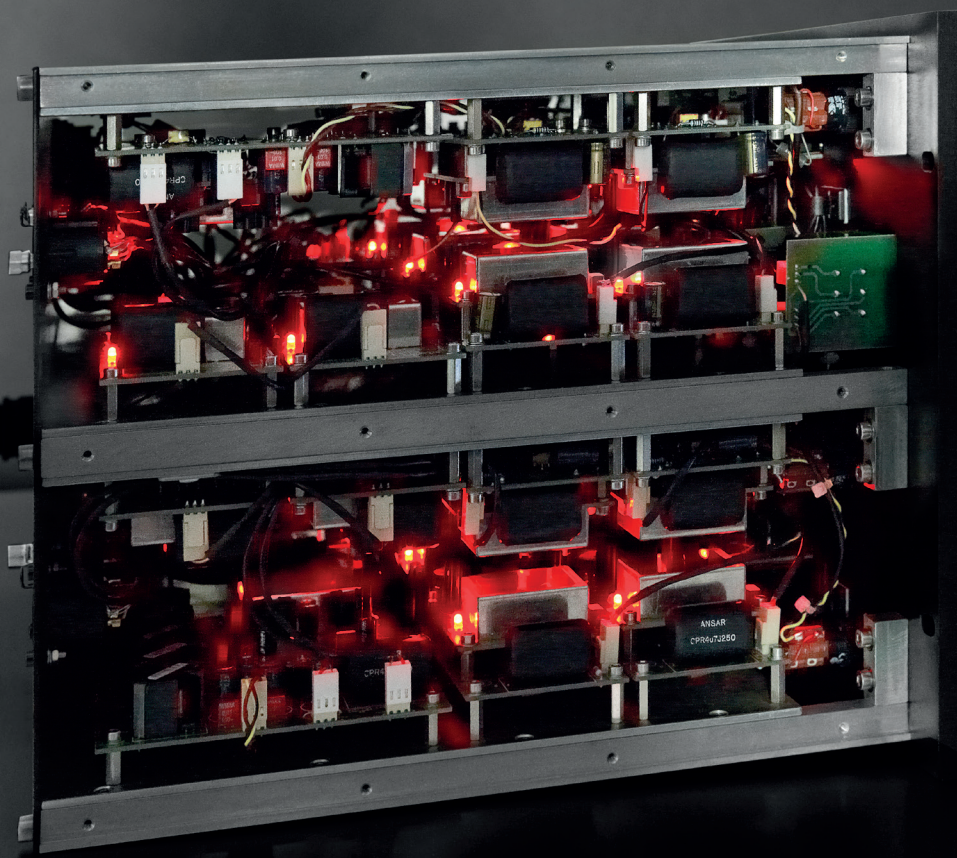


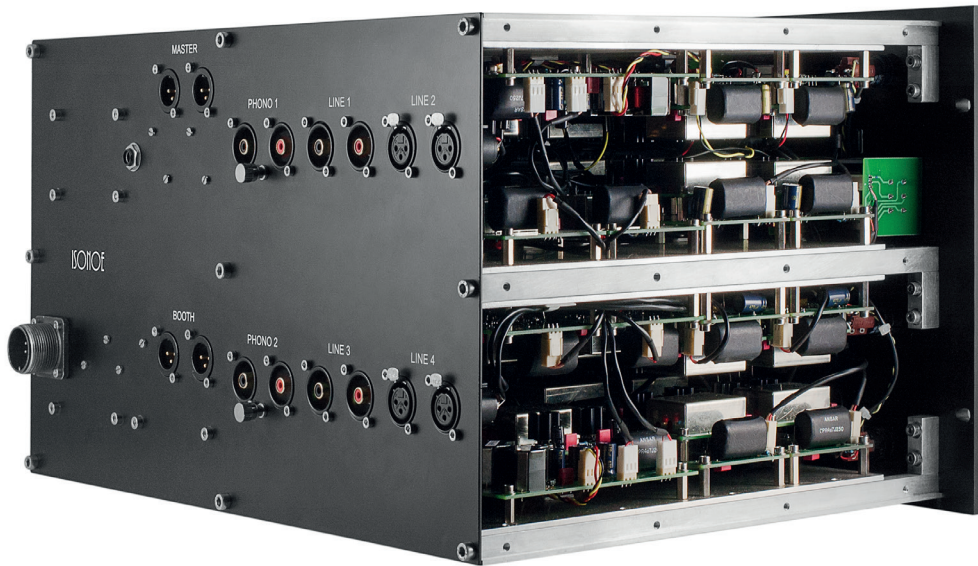
Background

Having evaluated many examples, Sam Shepherd (aka 'Floating Points') came to the conclusion that, in comparison with the quality of equipment employed to record and mix much of his record collection, the DJ mixer represented a bottle-neck.

The FP mixer is the result of a request from Floating Points for a mixer containing the same grade of circuitry found in World-class studios. It was designed and manufactured from the ground up over a 4 year period. All circuitry is single-ended class A and built exclusively from discrete transistors, with no class A/B stages or integrated circuits whatsoever in the path.

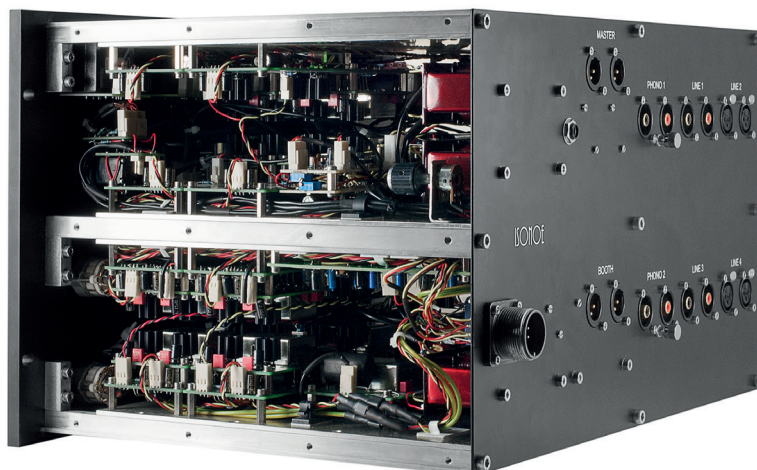
Its mechanical construction is of equal calibre to the circuitry, with all electronics being shielded by twin layers of alloy and steel.





The FP Mixer embodies numerous innovations, with many being World-Firsts in a DJ mixer:

- Single-Ended, Non-Complementary Class A Circuitry From Input to Output
- Inductor-Based Passive Isolator on Each Channel
- Low Impedance Passive Summing Throughout, with no virtual earth stages
- 30 Custom-Designed Inductors in Total
- 1% Precision Tolerance Capacitors Throughout All Filter Circuits
- Non-inverting Topology Throughout
- Gas-Plasma PPM Metering



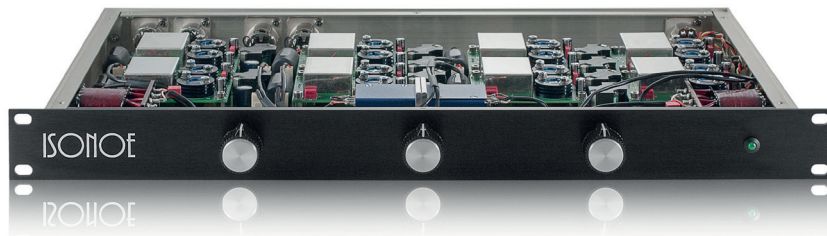


- Logic-Controlled, Sealed-Gas Relay Switching, ensuring the most direct signal path without extraneous wiring, enabling user to seamlessly punch the Isolators and Equaliser in / out
- 200W External Linear-Regulated Power Supply
- Multi-Layer PCBs Throughout
- Twin-Layer Shielding Construction, consisting of an inner 3mm alloy chassis, encased inside a 2mm steel outer enclosure
- All Input and Outputs Transformer Coupled, via transformers manufactured by a famous British manufacturer
- 10mm-Thick, CNC-Machined, Engraved and Anodised Front Panel
- Original NOS Bakelite RCA Knobs and RK40 Potentiometers Throughout





Each Passive Isolator contains 10 proprietary-designed inductors with specially selected cores and 1% precision tolerance capacitors. All internal signal wiring is via Mogami cable, augmented with silver-plated / PTFE-insulated wire.



19" Version of Passive Isolator